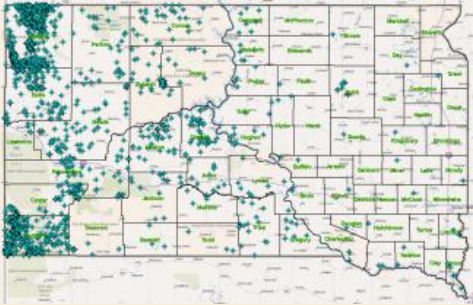
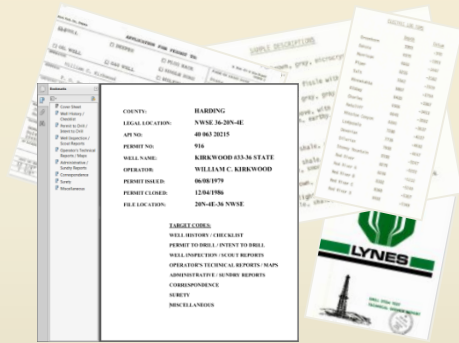


1. Interactive Maps

Available at sddenr.net/sdoil/oilgas_app.html



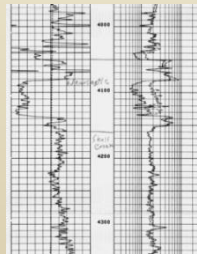
Interactive point-and-click maps for oil and gas permits, geophysical logs, and records of drilling & well completion



Click on a well to instantly get a complete oil and gas permit file, in bookmarked PDF format



Click on a well to instantly get a drilling record



Click on a well to instantly get geophysical logs

- Various **base maps** showing street, aerial, terrain, and topography are provided by ESRI's online mapping service and are readily changeable.
- There are several **data layers** that can be turned on and off.

Department of Environment and Natural Resources (DENR)

Oil and Gas Initiative

Promoting Exploration and Development of South Dakota's Oil and Gas Resources

DENR's One-Stop Shop for Oil and Gas Information

Available at sddenr.net/sdoil

Three ways to get information!

1. Browse, view, and download data using [interactive maps](#).
2. Use [online databases](#) to search for and download data.
3. Download [publications](#).

Plus

Regulations Streamlined in 2011

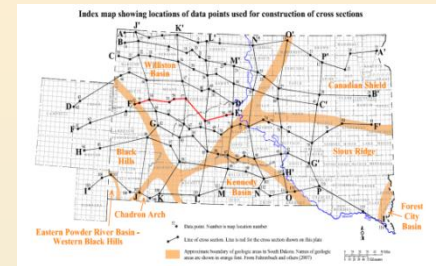
Unnecessary rules were eliminated and others were changed to expedite industry activity.

2. Online Databases for nearly 100,000 drill holes

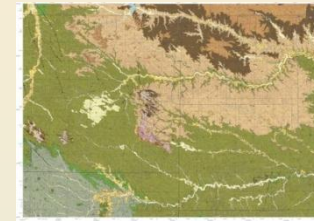
- Records of oil and gas drilling from ≈1,900 locations at sddenr.net/oil_gas/
- Records of water well completion from ≈62,245 locations at denr.sd.gov/des/wr/dblogsearch.aspx
- Other records of test hole and well drilling from ≈34,350 locations at sddenr.net/liithdb/
- Records of DENR's observation well measurements from 1,555 wells at denr.sd.gov/des/wr/dbobsearch.aspx

3. Examples of Publications

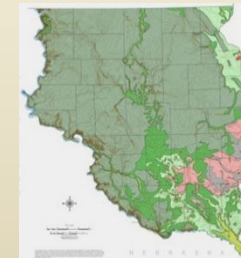
Order hard copy or get free downloads at www.sdgs.usd.edu



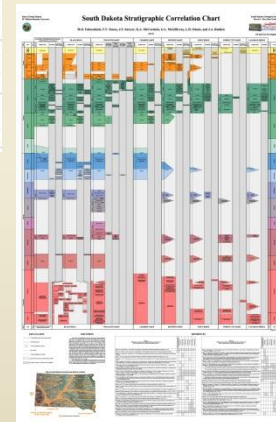
Statewide cross sections



Surface geologic maps



Bedrock geologic map

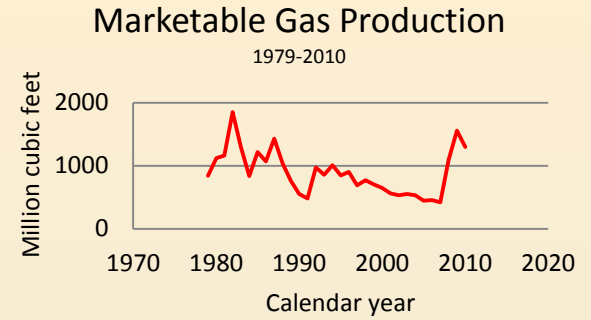
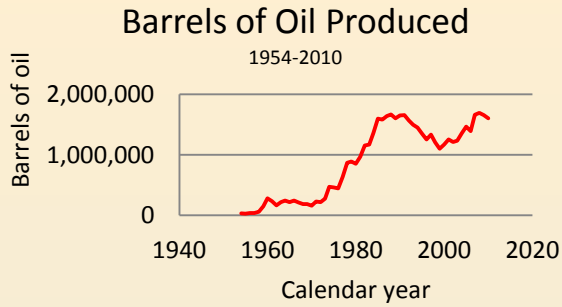


Names and distribution of geologic units

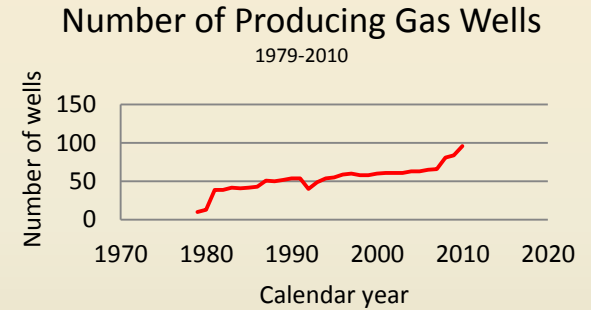
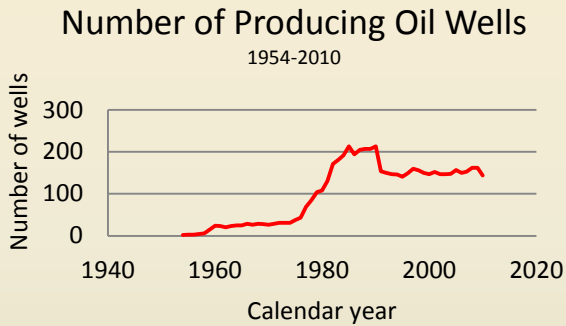


Subdivisions of the Precambrian surface

South Dakota Oil and Gas Facts



- Oil production began in 1954.
- The discovery well was drilled in 1953 in Harding County by Shell Oil Company.
- The well was drilled to a depth of 9,332 feet.
- The producing geologic unit is the Red River Formation.
- The Red River Formation remains South Dakota's most productive geologic unit for oil.
- North Dakota's Bakken Formation does not exist in South Dakota.
- The Tyler Formation and Three Forks Shale being developed in North Dakota do exist in South Dakota but remain effectively unexplored.

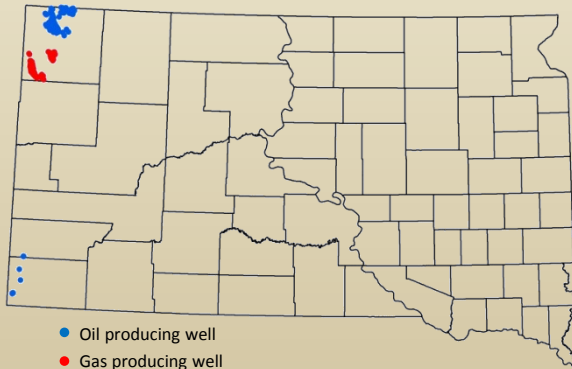


State Oil and Gas Revenues

Fiscal year	Conservation tax ¹	Severance tax ²	Permit fees ³
2011	\$281,440	\$5,276,994	\$2,500
2010	\$240,282	\$4,505,530	\$3,100
2009	\$297,771	\$5,596,540	\$7,100
2008	\$294,773	\$5,526,990	\$3,600
2007	\$168,178	\$3,152,890	\$5,000
2006	\$173,710	\$3,255,856	\$2,900

- ¹ SDCL 10-39B: 0.24% of the value of oil and gas produced; dedicated to DENR to carry out oil and gas activities.
- ² SDCL 10-39A: 4.5% of the value of oil and gas produced; half goes to the state general fund and half goes to the county in which the production occurred.
- ³ Application fee of \$100 for a permit to drill an oil or gas well; dedicated to DENR to carry out oil and gas activities.

Areas of Oil and Gas Production



Oil & Gas Drilling Permits Issued

